



Smart Meter Data Adaptors Technical Overview

Chameleon Smart Meter Data Adaptors securely obtain energy data from smart electricity meters. The Adaptors can be installed by the end users allowing them to view their energy data on a Chameleon [In-Home Display](#), mobile app or online portal in real time. The Data Adaptors enable consumers to view their instant usage, historical consumption (day/week/month/year) and meter reading.



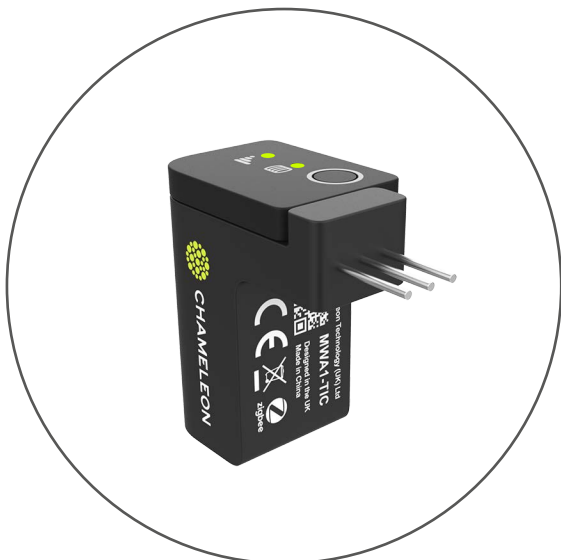
Compatible with European meters and ports

The Data Adaptors are compatible with a range of European meter manufacturers and a variety of interfaces/ports including TIC, P1 and CCC ports.

Connectivity

The Smart Meter Data Adaptors can use Zigbee SE 1.4 to send energy data to either an [In-Home Display](#) or smart home gateway.

Alternatively, the Data Adaptors can use Wi-Fi connectivity to send the energy data to Chameleon's [iVIE Data Platform](#), giving consumers the ability to view their real-time energy consumption on a mobile application or online portal. The real-time data can then be linked to other IoT and connected home applications to unlock additional benefits for the consumer.



Key features

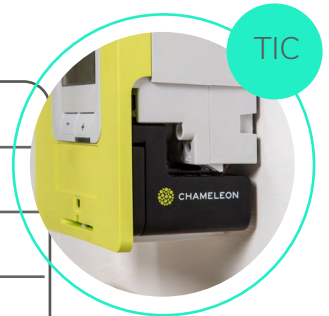
- Provide a comprehensive range of data - 5 second updates
- 2 LEDs indicate connectivity status and commissioning process
- A single push button for commissioning process of the device
- Powered by the meter (External power supply for P1 version if DSMR<V4)

Product attributes

Following are the product attributes for each of the three Smart Meter Data Adaptors.

TIC - Linky Interface for French Meters

Radio link to IHD	Zigbee 2.4GHz (IEEE 802.15.4)
Cloud connection	Wi-Fi 2.4GHz (IEEE 802.11)
Meter interface	TIC - 3 pin connector
User interface	A single push button and 2 LEDs
Power supply	6-14V AC<130mW



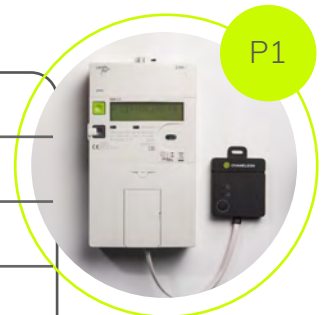
CCC - Interface for Kamstrup Omnipower Meters

Radio link to IHD	Zigbee 2.4GHz (IEEE 802.15.4)
Cloud connection	Wi-Fi 2.4GHz (IEEE 802.11)
User interface	CCC - 6-way pin header
Meter interface	A single push button and 2 LEDs
Power supply	4.15V DC<75mA



P1 - DSMR Standard

Radio link to IHD	Zigbee 2.4GHz (IEEE 802.15.4)
Cloud connection	Wi-Fi 2.4GHz (IEEE 802.11)
Meter interface	P1 - RJ12 connector
User interface	A single push button and 2 LEDs
Power supply	5V DC<250mA



To find out more, please contact
Dorian Ennequin
European Product Manager
M: +33 (0) 607 625 661
E-mail (EU): europe@chameleontechnology.co.uk

Address (FR):
Chameleon Technology
Coworking Rodez
1 Place Bonnaterra
12000 Rodez

Chameleon Technology (UK) Ltd
T: +44 (0) 1423 815 911
E-mail (UK): info@chameleontechnology.co.uk

Address (UK):
Chameleon Technology (UK) Ltd
Gardner House,
Hornbeam Park
Harrogate, HG2 8NA