

# MOULDED CASE CT - WITH UNIQUE TRANSDUCER OPTION

**TYPES: ASK105.6N**

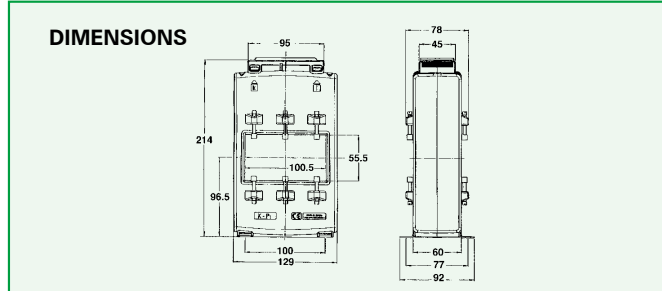
## FEATURES

- Foot or bus-bar mounted
- Snap fit secondary terminal covers
- Insulated ends to bus-bar pinch screws
- Transformer width 129mm
- Max bus-bar size 100 x 55mm
- Primary ranges from 2500 Amps to 4000 Amps
- 1 Amp or 5 Amp secondaries



## NMC PLUG IN TRANSDUCERS

P/No	CT SECONDARY	AUX SUPPLY	OUTPUT
NMC014-37215	1A	Self powered	0-20mA & 0-10VDC & 1A
NMC024-37015	5A	Self powered	0-20mA & 0-10VDC & 5A
NMC214-39235	1A	24VDC	4-20mA & 0-10VDC & 1A
NMC224-39035	5A	24VDC	4-20mA & 0-10VDC & 5A
NMC314-36235	1A	230VAC	4-20mA & 0-10VDC & 1A
NMC324-36035	5A	230VAC	4-20mA & 0-10VDC & 5A
NMC414-76235	1A	110VAC	4-20mA & 0-10VDC & 1A
NMC424-76035	5A	110VAC	4-20mA & 0-10VDC & 5A



PRIMARY CURRENT	2500	3000	4000
VA	30	30	30
CLASS	1	1	1

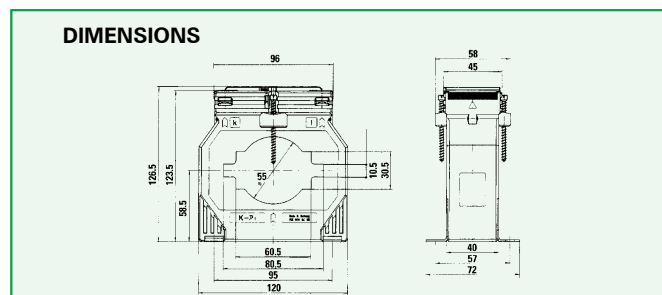
All ASK105.6N models available with 1 Amp or 5 Amp secondaries. Above ratios available as Class 0.5 to special order, please consult sales office for information.

# MOULDED CASE CT - WITH UNIQUE TRANSDUCER OPTION

**TYPES: ASK81.4**

## FEATURES

- Foot or bus-bar mounted
- Snap fit secondary terminal covers
- Insulated ends to bus-bar pinch screws
- Transformer width 120mm
- Max conductor size 55mm dia.
- Max bus-bar size 80x10mm or 60x 30 or 2 x60x10mm
- Primary ranges from 400 Amps to 2000 Amps
- 1 Amp or 5 Amp secondaries



PRIMARY CURRENT	400	500	600	800	1000	1200	1500	1600	2000
VA	5	10	10	15	15	15	30	30	30
CLASS	1	1	1	1	1	1	1	1	1

All ASK81.4 models available with 1 Amp or 5 Amp secondaries. Above ratios available as Class 0.5 to special order, please consult sales office for information.