

# MOULDED CASE CT - WITH UNIQUE TRANSDUCER OPTION

## TYPE: ASK41.4

### FEATURES

- Din rail, bus-bar or foot mounted
- Snap fit secondary terminal covers
- Insulated ends to bus-bar pinch screws
- Transformer width 70mm
- Max conductor size 32mm dia.
- Max bus-bar size 40x10mm or 2x 30x5mm
- Primary ranges from 50 Amps to 1000 Amps
- 1 Amp or 5 Amp secondaries



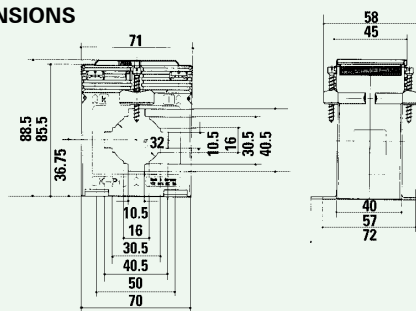
PRODUCT  
GROUP  
W



### NMC PLUG IN TRANSDUCCERS

P/No	CT SECONDARY	AUX SUPPLY	OUTPUT
NMC013-37214	1A	Self powered	0-20mA & 0-10VDC & 1A
NMC023-37014	5A	Self powered	0-20mA & 0-10VDC & 5A
NMC213-39234	1A	24VDC	4-20mA & 0-10VDC & 1A
NMC223-39034	5A	24VDC	4-20mA & 0-10VDC & 5A
NMC313-36234	1A	230VAC	4-20mA & 0-10VDC & 1A
NMC323-36034	5A	230VAC	4-20mA & 0-10VDC & 5A
NMC413-76234	1A	110VAC	4-20mA & 0-10VDC & 1A
NMC423-76034	5A	110VAC	4-20mA & 0-10VDC & 5A

#### DIMENSIONS



PRIMARY CURRENT	60	80	100	150	200	250	300	400	500	600	800	1000
VA	1.5	2.5	3.75	5	10	10	15	15	15	15	15	15
CLASS	1	1	1	1	1	1	1	1	1	1	1	1

■ All ASK41.4 models available with 1 Amp or 5 Amp secondaries. Some of the above ratios available as Class 0.5 & Class 0.2 to special order, please consult sales office for information.

Spare Din rail mounting clips available P/No. 55012

# MOULDED CASE CT - WITH UNIQUE TRANSDUCER OPTION

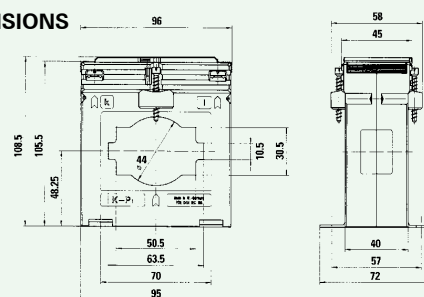
## TYPE: ASK61.4

### FEATURES

- Foot or bus-bar mounted
- Snap fit secondary terminal covers
- Insulated ends to bus-bar pinch screws
- Transformer width 95mm
- Max conductor size 44mm dia.
- Max bus-bar size 63x10mm or 2x 50x10mm
- Primary ranges from 200 Amps to 1600 Amps
- 1 Amp or 5 Amp secondaries



#### DIMENSIONS



PRIMARY CURRENT	200	250	300	400	500	600	800	1000	1200	1500	1600
VA	2.5	2.5	5	10	15	15	15	15	15	15	15
CLASS	1	1	1	1	1	1	1	1	1	1	1

■ All ASK61.4 models available with 1 Amp or 5 Amp secondaries. Above ratios available as Class 0.5 & Class 0.2 to special order, please consult sales office for information.