

DIN 48mm COMBINED HOUR & OPERATION COUNTER

PRODUCT
GROUP
U

BAUSER®

TYPE: 920

■ FEATURES

- IP65 front
- Optional IP65 panel gasket
- Optional 55mm bezel
- Combined hours & operations
- Optional 72mm bezel
- Screw terminals
- Ratchet fixing clamp
- Black front
- Operation indication
- One set of input connections

■ DESCRIPTION

Din 48mm seven digit combined hour run counter and operations counter. Front panel sealed as standard to IP65 with an additional optional IP65 panel sealing gasket. Suitable for square or round hole fixing, with optional 55mm or 72mm bezels. Connection is via one pair of terminals only, on connection and disconnection of the supply voltage the operation counter increments one count. On a continued supply voltage being present the hour counter continues to increment.

■ ORDERING INFORMATION

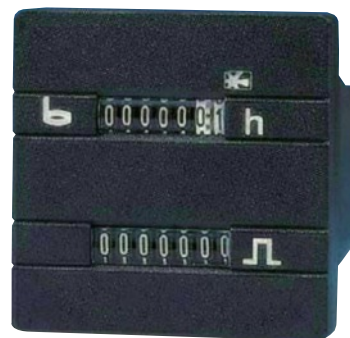
920/ AC Volts 110, 230VAC (Specify 50Hz or 60Hz)

920/ DC Volts 24VDC

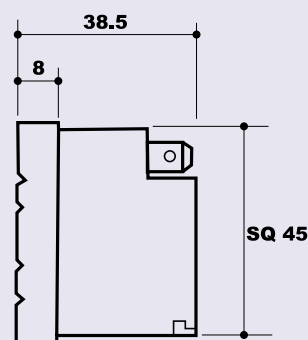
55mm bezel

72mm bezel

IP65 48x48mm gasket



DIMENSIONS



■ STANDARD SPECIFICATIONS

Counting range:	99999.99h 9999999 ops
AC Voltages:	110, 230V ($\pm 10\%$)
Frequency:	50Hz or 60Hz (specify)
DC Voltages:	24 ($\pm 10\%$)
Current:	AC 3-8mA, DC 7-13mA
Protection class:	IP65 front, IP00 terminals
Temp range:	-10°C to 50°C
CE marked:	Yes
Terminations:	Screw

DIN RAIL HOUR COUNTER

TYPES: 661.6/AC VOLTS 666.6/DC VOLTS

■ FEATURES

- Din rail mounted
- Modular construction
- Seven digits
- Colour grey RAL7035

■ DESCRIPTION

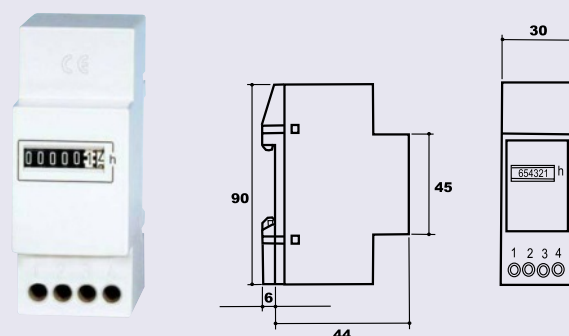
Din rail mounted grey modular type hour counter, suitable for mounting within consumer units. Width 36mm (2 modules), height 60mm. These counters benefit from an excellent specification regarding shock and vibration resistance.

■ ORDERING INFORMATION

666.1 / AC Volts 12, 24, 48, 110, 230, 400VAC (Specify 50Hz/60Hz)

666.6 / DC Volts 12-24VDC

DIMENSIONS



■ STANDARD SPECIFICATIONS

Counting range:	99999.99h
AC Voltages:	12, 24, 48, 110, 230, 400VAC
Frequency:	50Hz or 60Hz (specify)
DC Voltages:	12-24VDC ($\pm 10\%$)
Current:	AC 5-15mA, DC 5-15mA
Protection class:	IP65
Temp range:	-10°C to +70°C
Vibration resist:	1g (10-500Hz), to EN60068-2-34
Shock resist:	30g (18mSec), to EN60068-2-27