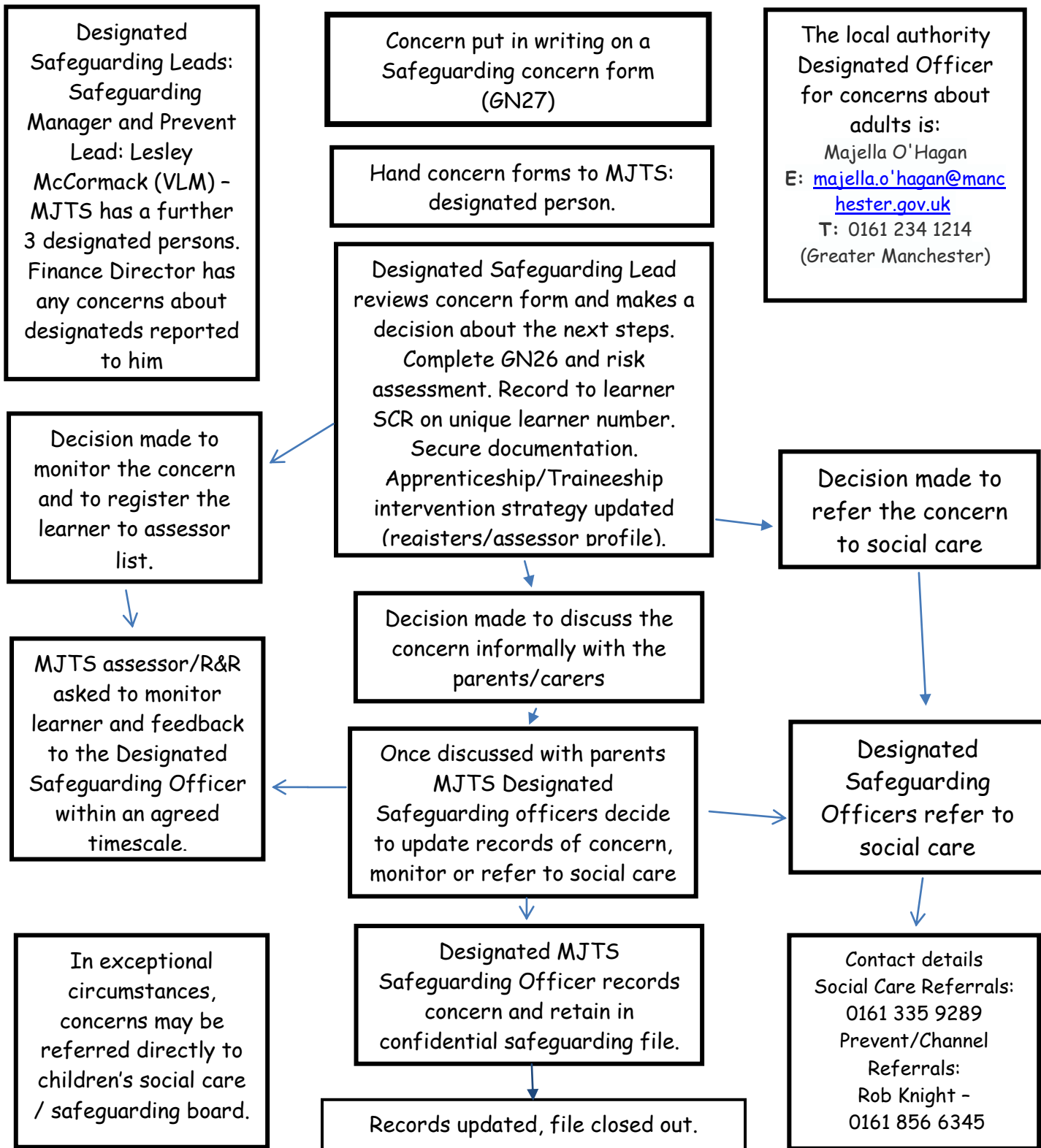


Flow Chart for Raising Safeguarding Concerns about a Child at MJTS



NSPCC Whistleblowing Hotline: 0808 800 5000

This policy will be reviewed annually as a minimum or more frequently due to legislative changes or changes to procedure. The policy will be impact assessed under the Single Equality Scheme.

This policy has links with the following policies:

- Extremism policy
- Teaching and learning Policy
- Personal Development, Behaviour and Welfare
- SEND Policy
- E-Safety and Acceptable Use of the Internet Policies
- External Visitors Checklist
- Safer Recruitment Policy
- FGM Policy
- Equality Policy
- Race Equality Policy



michaeljohntraining



mjts_manchester



mjts_manchester

MJTS is an Equal Opportunities Training School, we welcome people from all backgrounds.

Treating people fairly according to their needs. MJTS is committed to a whole organisational approach to 'Personal Development, Behaviour and Welfare'.

SA31/Rev 3/Sept



michaeljohntraining



mjts_manchester



mjts_manchester

**MJTS is an Equal Opportunities Training School, we welcome people from all backgrounds.
Treating people fairly according to their needs. MJTS is committed to a whole
organisational approach to 'Personal Development, Behaviour and Welfare'.**

SA31/Rev 3/Sept

