
From: MARK INSKIP [REDACTED]
Sent: 19 June 2016 22:37
To: reviews <reviews@lgbce.org.uk>
Subject: Cambridgeshire County Council Boundary Review

I am writing as the Chair of the North East Cambridgeshire Liberal Democrats Local Party. This Local Party covers the North East Cambridgeshire Parliamentary constituency and therefore all of the Fenland District Council area and part of the East Cambridgeshire District Council area. I am writing to express my local party's support for County Councillor Maurice Leeke's proposals for Fenland and East Cambridgeshire (attached).

The Liberal Democrats in North East Cambridgeshire take the view that two-member divisions in rural parts of Cambridgeshire are geographically too large for effective representation, linking local communities which have few if any common local connections and no strong sense of shared identity. In addition the large number of parish councils in each two-member division is likely to weaken links between those parish councils and their county councillors. Councillor Leeke's proposals address these concerns and also address a number of issues with the existing proposal from the LGBCE. To summarise the benefits of councillor Leeke's proposals are:

1. Removal of unpopular and unworkable two-member county divisions
2. A viable eight single member alternative solution for East Cambridgeshire
3. No division of parishes between county council divisions (apart from town council areas which are larger than a single division)

We strongly oppose the proposal submitted by East Cambridgeshire District Council for nine county divisions within East Cambridgeshire. It does not align with the LGBCE's desire for an eight division solution, it impacts the overall county council size and potentially the number of divisions allocated to other district areas in the county. Furthermore it divides the Parish and village of Sutton between two divisions, a proposal which is strongly opposed by Sutton Parish Council and the local community.

We would therefore urge that the LGBCE adopt the proposals submitted by county councillor Leeke, and to reject the alternative for East Cambridgeshire submitted by East Cambridgeshire District Council.

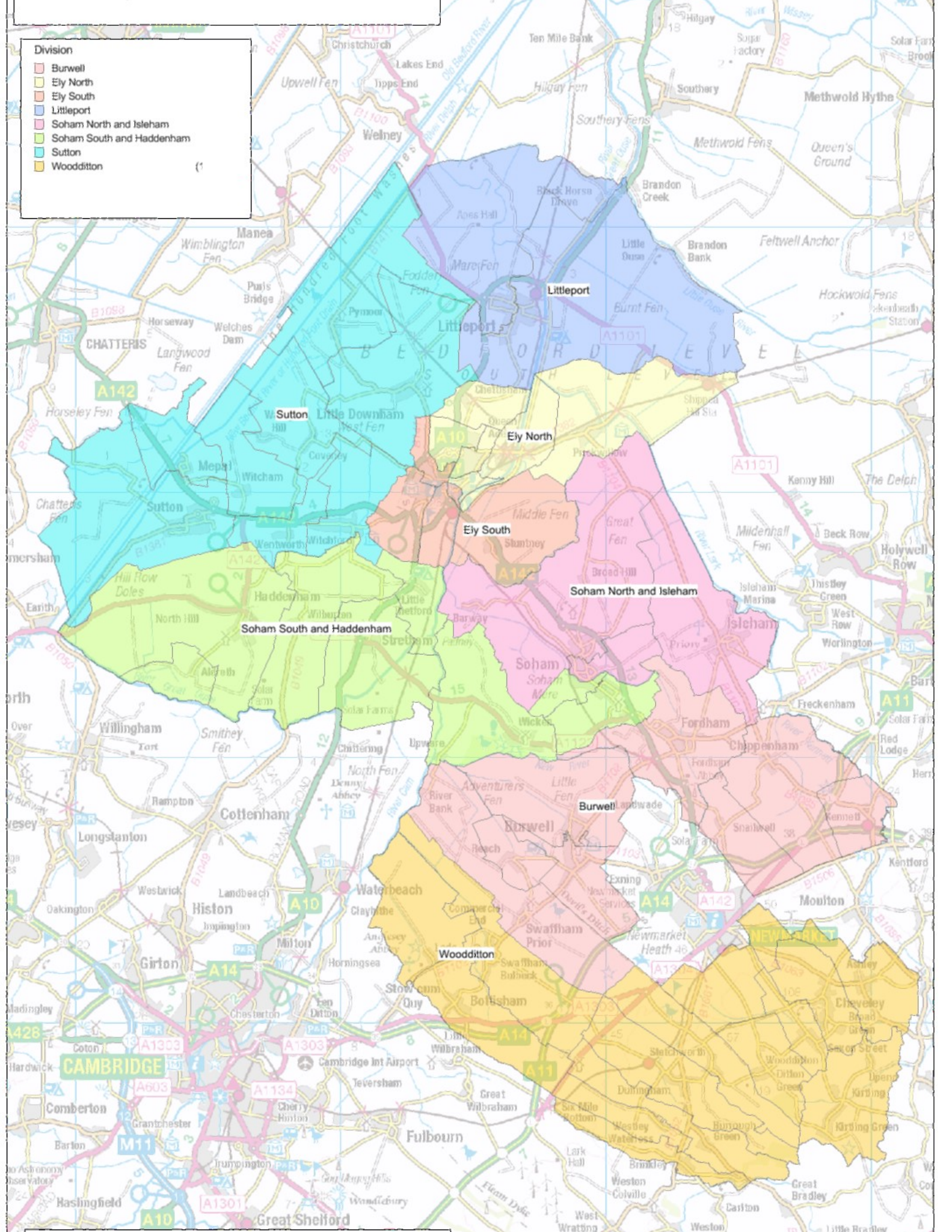
Best Regards,

Mark Inskip
Local Party Chair
North East Cambridgeshire Liberal Democrats

East Cambridgeshire

Division

- Burwell
- Ely North
- Ely South
- Littleport
- Soham North and Isleham
- Soham South and Haddenham
- Sutton
- Woodditton



Proposed electoral division amendment Fenland

Divisions

- Chatteris (1)
- Elm (1)
- March North (1)
- March South (1)
- Roman Bank & Peckover (1)
- Whittlesey North (1)
- Whittlesey South (1)
- Wisbech East (1)
- Wisbech West (1)

