

What happens next?

We have now completed our review of Copeland Borough Council.

The recommendations must now be approved by Parliament. A draft order - the legal document which brings into force our recommendations - will be laid in Parliament.

Subject to parliamentary scrutiny, the new electoral arrangements will come into force at the local elections in May 2019.

Our recommendations:

The table lists all the wards we are proposing as part of our final recommendations along with the number of voters in each ward. The table also shows the electoral variances for each of the proposed wards, which tells you how we have delivered electoral equality. Finally, the table includes electorate projections for 2023, so you can see the impact of the recommendations for the future.

Copeland Borough Council

Final recommendations on the new electoral arrangements

Ward Name:	Number of Councillors:	Electorate (2017):	Number of Electors per Councillor:	Variance from average %	Electorate (2023):	Number of Electors per Councillor:	Variance from Average %
Arlecdon & Ennerdale	2	3,738	1,869	13%	3,845	1,922	11%
Beckermet	1	1,747	1,747	6%	1,804	1,804	5%
Black Combe & Scafell	2	3,460	1,730	5%	3,520	1,760	2%
Cleator Moor	3	5,274	1,758	7%	5,863	1,954	13%
Corkickle	1	1,651	1,651	0%	1,634	1,634	-5%
Distington, Lowca & Parton	2	3,097	1,549	-6%	3,107	1,553	-10%
Egremont	3	4,767	1,589	-4%	4,884	1,628	-6%
Gosforth & Seascale	2	3,321	1,661	1%	3,478	1,739	1%
Hillcrest	3	4,239	1,413	-14%	4,729	1,576	-9%
Kells	1	1,784	1,784	8%	1,837	1,837	7%
Millom	3	4,593	1,531	-7%	4,712	1,571	-9%
Moor Row & Bigrigg	1	1,828	1,828	11%	1,940	1,940	12%
Moresby	1	1,508	1,508	-9%	1,592	1,592	-8%
Sneckyeat	1	1,751	1,751	6%	1,748	1,748	1%
St Bees	1	1,785	1,785	8%	1,836	1,836	6%
Whitehaven Central	3	4,605	1,535	-7%	4,754	1,585	-8%
Whitehaven South	3	5,291	1,764	7%	5,626	1,875	9%
Totals:	33	54,436	-	-	56,909	-	-
Averages:	-	-	1,650	-	-	1,725	-



Who we are:

- The Local Government Boundary Commission for England is an independent body set up by Parliament.
- We are not part of government or any political party.
- We are accountable to Parliament through a committee of MPs chaired by the Speaker of the House of Commons.
- Our main role is to carry out electoral reviews of local authorities throughout England.

Electoral review:

- An electoral review examines and proposes new electoral arrangements for a local authority, including:
- The total number of councillors representing the council's voters ('council size').
 - The names, number and boundaries of wards or electoral divisions.
 - The number of councillors for each ward or division.

Why Copeland?

- Copeland Borough Council submitted a formal request to the Commission for an electoral review.

Our proposals:

- Copeland Borough Council currently has 51 councillors. Based on the evidence we received, we recommend that **33 councillors** should serve the borough in the future.
- We believe our final recommendations meet our statutory criteria to:
 - (1) Deliver electoral equality for voters.
 - (2) Reflect community interests and identities.
 - (3) Promote effective and convenient local government.

Summary of our recommendations

We have considered all the submissions we received during our consultation on our draft recommendations.

The final recommendations propose that Copeland Borough Council should have **33 councillors**. This is **18 fewer** than the current number of councillors.

Those councillors should represent 17 wards, representing seven one-councillor wards, four two-councillor wards and six three-councillor wards across the borough.

The boundaries of one ward will stay the same and 24 wards will change.

An outline of the proposals is shown in the map to the right. A detailed report on the recommendations and interactive mapping is available on our website at: www.lgbce.org.uk.

Find out more: consultation.lgbce.org.uk:

- view the map of our recommendations down to street level.
- zoom into the areas that interest you most.
- find more guidance on the review process.
- read the full report of our recommendations.

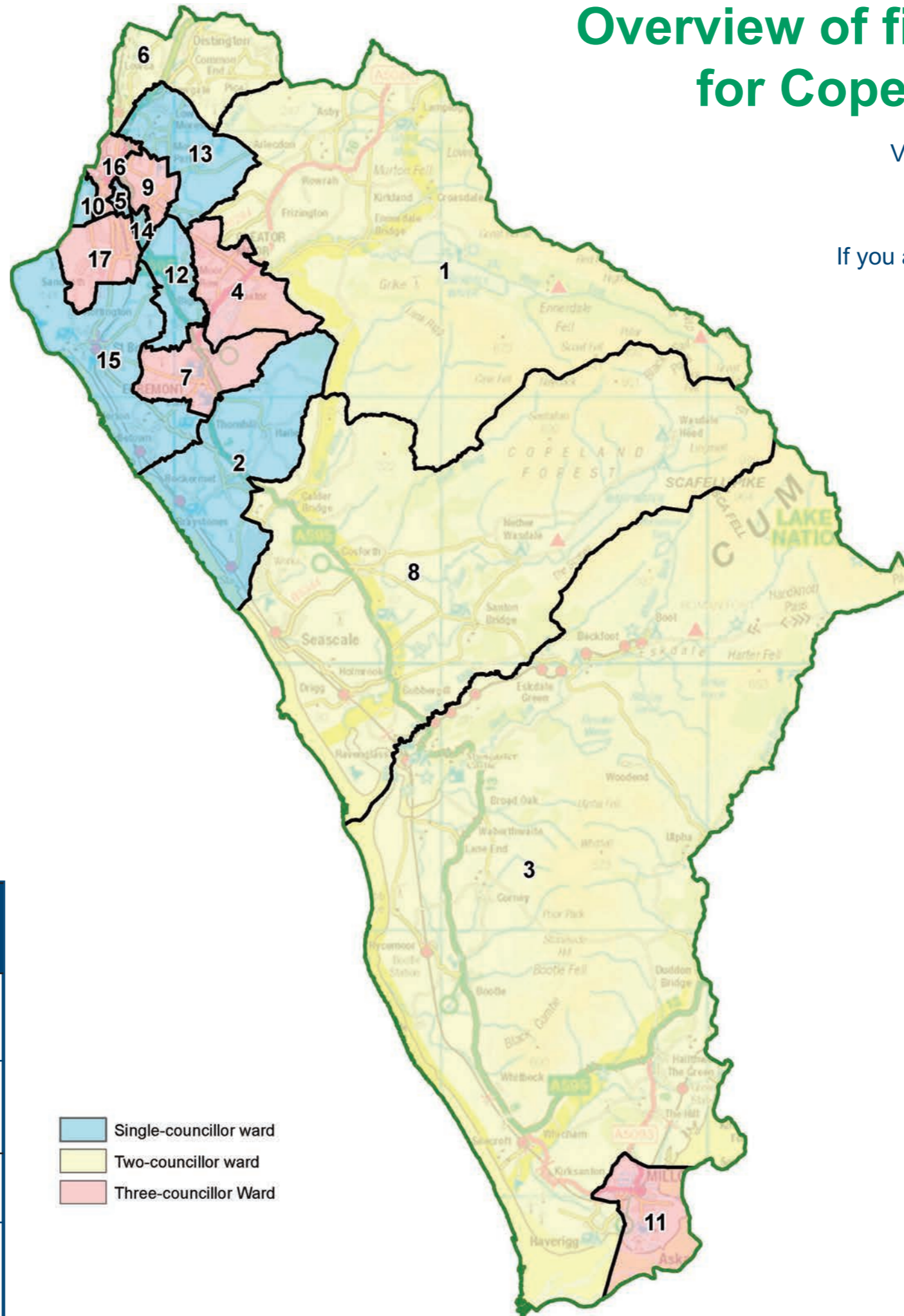
Stage of review	Description
28 November 2017 - 12 February 2018	Public consultation on new ward boundaries
3 April 2018 - 11 June 2018	Public consultation on draft recommendations
7 August 2018	Publication of final recommendations
May 2019	Subject to parliamentary approval - implementation of new arrangements at local elections

Overview of final recommendations for Copeland Borough Council

View this map online and explore it in more detail at: consultation.lgbce.org.uk

Follow us on Twitter: [@LGBCE](https://twitter.com/LGBCE)

If you are viewing this page online, click on the map to go straight to our interactive consultation area.



Key:

1. Arlecdon & Ennerdale
2. Beckermeth
3. Black Combe & Scafell
4. Cleator Moor
5. Corkickle
6. Distington, Lowca & Parton
7. Egremont
8. Gosforth & Seascale
9. Hillcrest
10. Kells
11. Millom
12. Moor Row & Bigrigg
13. Moresby
14. Sneckyeat
15. St Bees
16. Whitehaven Central
17. Whitehaven South

- Single-councillor ward
- Two-councillor ward
- Three-councillor Ward